



BREATH  
LAM



**Damas Laminates Pvt. Ltd.**  
Survey No. : 668, At. & Post: Ghadkan,  
Majara-Talod Road, Tal.: Prantij-380 205,  
Dist.: Sabarkantha, Gujarat, India.



+91 2770 255170  
+91 80002 16570

BREATH  
LAM  
VOL. 2



BREATH  
LAM



# INDEX

02	GLITTERETZO	05	veneer
08	concrete	10	oakwell
19	fabtex	20	oakwell hz finish
22	glitteretzo	24	high glossy
26	plain colors	28	suede finish

## ABOUT US

Breath Lam is a fine collection of potent laminates that are designed to suit everyday dwelling spaces. The vivid and cost-effective nature of these laminates makes them one of its kind. The range is designed consciously to address versatile needs of the market. It has earthy patterns, shimmery surfaces, and sober finishes within a myriad range. So, if you want to give your project a touch of intensity and sobriety; then this shall be your ideal book of choices.

## THE GLITTERATI OF GRACE

EXTREMELY ROYAL





## GLITTERETZO



## GATHER THE MESMERIC NUANCES

### THE FORM OF FINESSE

The precision of these stunning designs create a range of luxury as never experienced before. Give your spaces an air of exclusivity and exquisiteness.

BREATH  
LAM



30143 - GTR



## GLITTERETZO



30141 - GTR



30142 - GTR



30144 - GTR

## veneer



30139- VNR



30140 - VNR



## VENEER



### THE AIR OF INGENIOUSNESS

Within your living spaces, you have a choice to create a fresh new cult of exemplary designs and changing perspectives of hi-end luxuriance and lifestyle.



30112 - VNR



30102 - VNR

### EDGE OF STUNNING SPLENDOUR



30143 - VNR



30101 - VNR



30104 - VNR

BREATH  
LAM

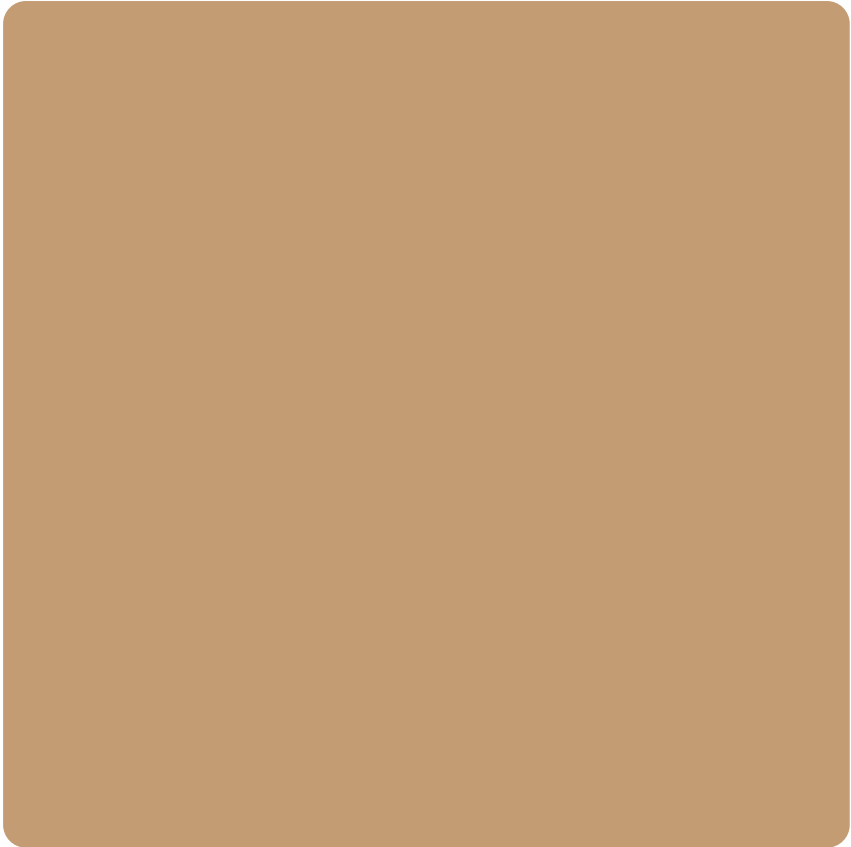




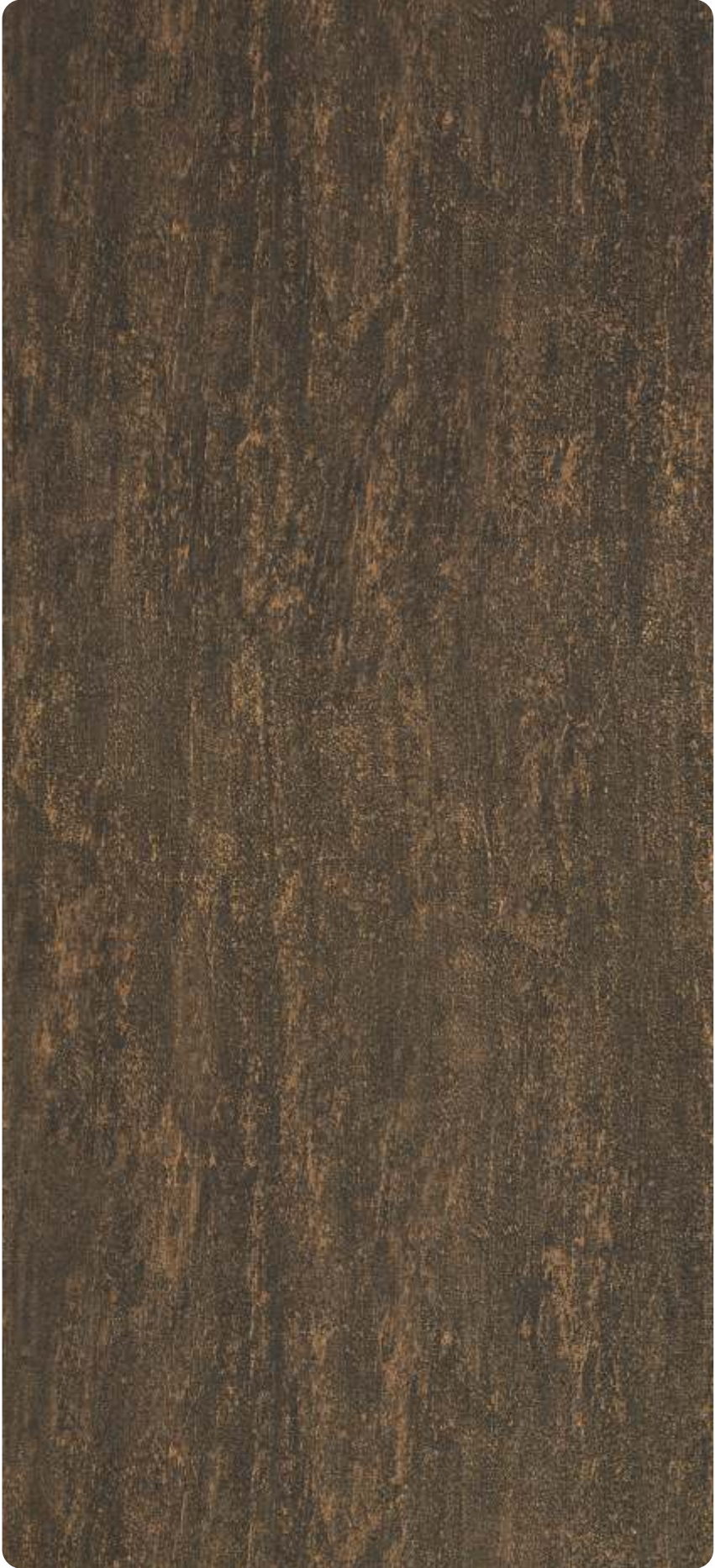
30155 - CNT



30153 - CNT



10122 - SF



30154 - CNT









30143 - OKW



30141 - OKW

**THE DAPPER FEEL OF TRENDS**

Exuding an enamoring form of vast textures that are created to give you a charismatic appeal, dip your soul in comfort and ease of an expert flair.



30142 - OKW



## OAKWELL



30111 - OKW



30101 - OKW



◀Used Laminate  
30111 - OKW



30139 - OKW



30140 - OKW



OAKWELL

BREATH  
LAM



30109 - OKW



30110 - OKW

**GIVE WAY TO ENTICEMENT**

Witness the efficacy of a pre-dominant reign and give an ideal expression to your living environment with elan and poise.

LAVISHNESS OF AN  
OPTIMUM LEVEL



30103 - OKW



◀Used Laminate  
30103 - OKW



## OAKWELL



30106 - OKW



MODISH VERVE  
OF RICHNESS



Used Laminate  
30106 - OKW

BREATH  
LAM



30129 - OKW



30130 - OKW



## OAKWELL



30104 - OKW



30120 - OKW

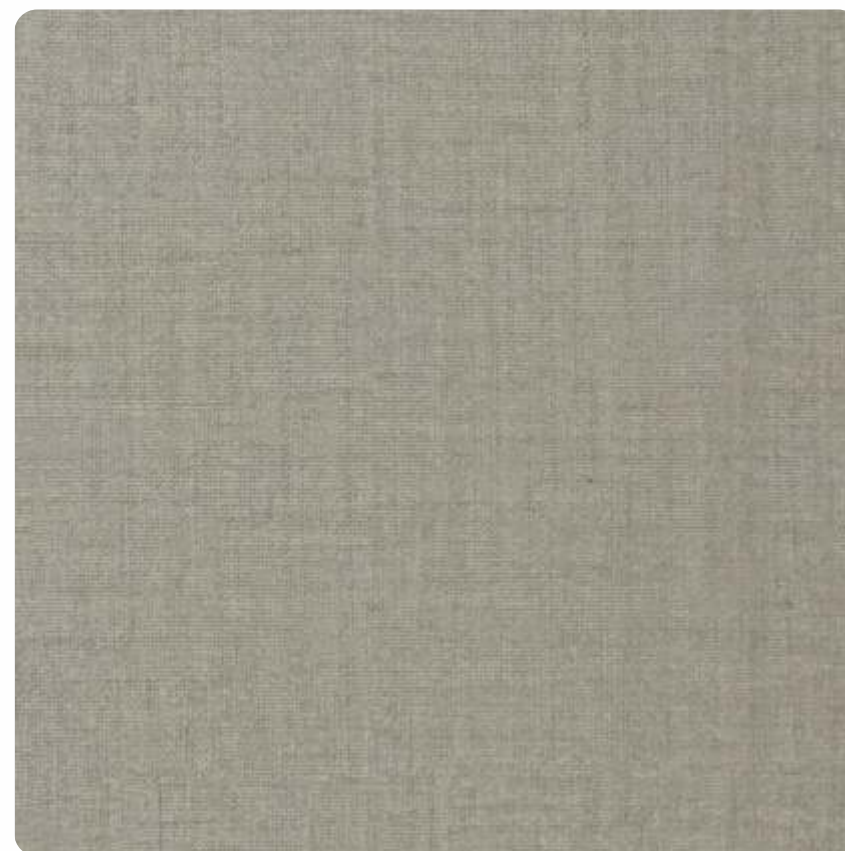
### SPARK OF SCINTILLATING REALM

Allure your being with a range of striking textures that create pomp and glory to your ordinary spaces, making it mesmeric.

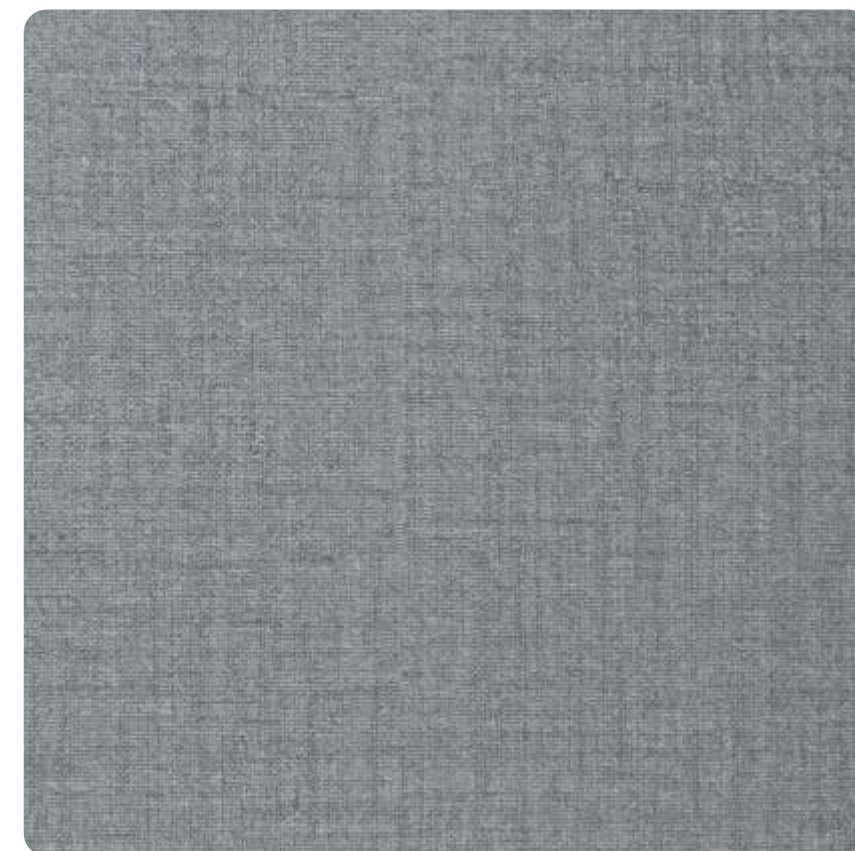
## FABTEX



### FORMS OF FABULOUS TENOR



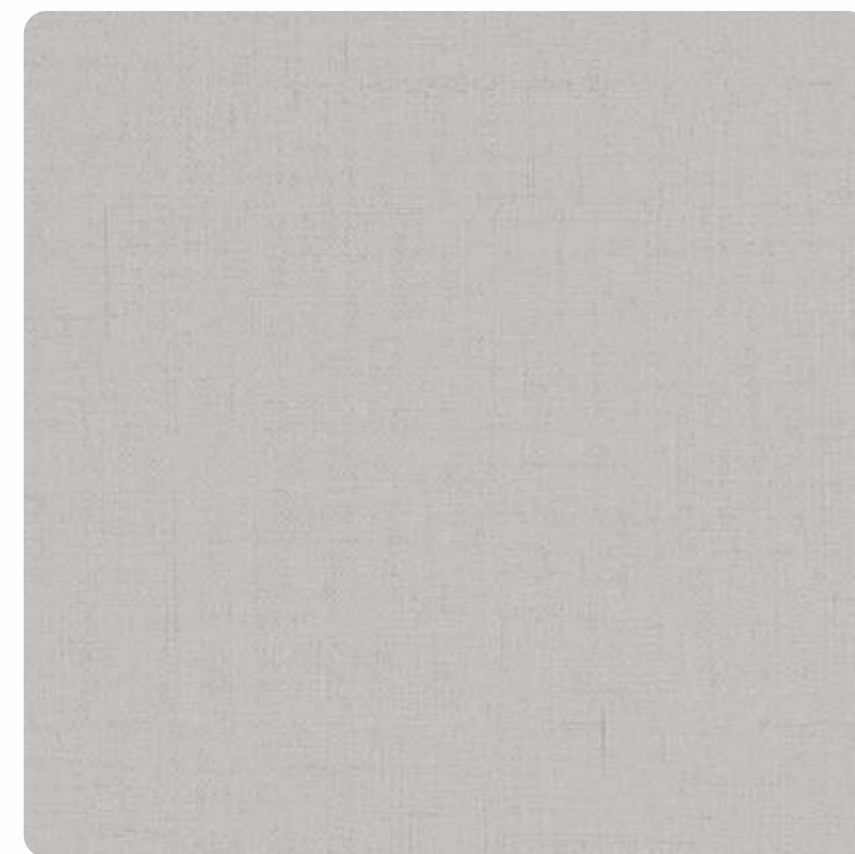
30116 - FT



30117 - FT



30118 - FT



30138 - FT

BREATH  
LAM



OAKWELL HORIZONTAL



30143 - OKW (HZ)



30130 - OKW (HZ)



30120 - OKW (HZ)



◀Used Laminate  
30139 - OKW (HZ)

◀Used Laminate  
30140 - OKW (HZ)



30140 - OKW (HZ)



30139 - OKW (HZ)



**THE SIZZLE OF SUAVE**  
Artistry of the highest order has come to your doorstep with the promise to envelop your space in resplendence and refinement.

◀ Used Laminate  
10123 - GTR

10126 - GTR

10123 - GTR

10122 - GTR

10124 - GTR



HIGH GLOSSY



30142 - GLS



30120 - GLS



30141 - GLS



30144 - GLS

**THE FERVOR OF VIVACITY**  
Let nature's exceptional spirit fill your ambiance with brilliant hues and perfect textures in a way you have never seen before.



30140 - GLS



30139 - GLS



30153 - GLS

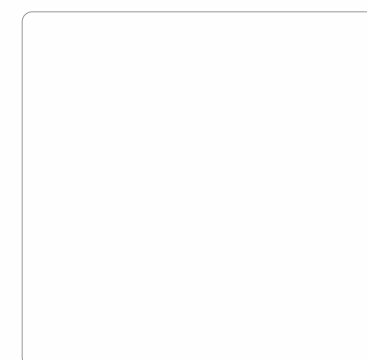


30154 - GLS

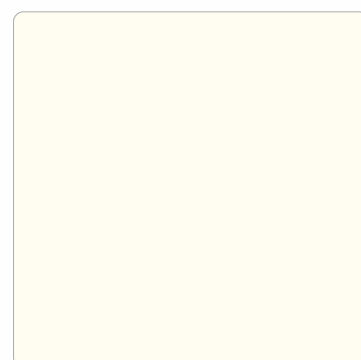
IDEAL FORM OF  
MODERN LUXURY



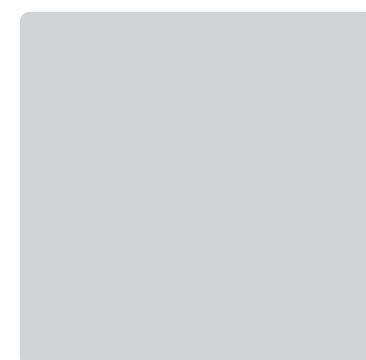
## SUEDE SOLID



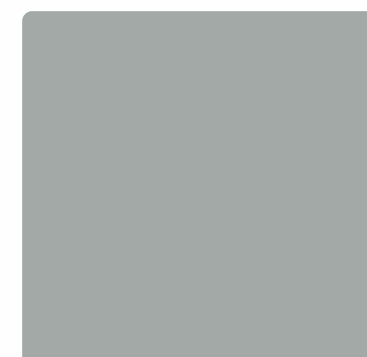
10101 - SF



10126 - SF



10105 - SF



10127 - SF



10106 - SF



10128 - SF



10123 - SF



10122 - SF



10124 - SF



10111 - SF

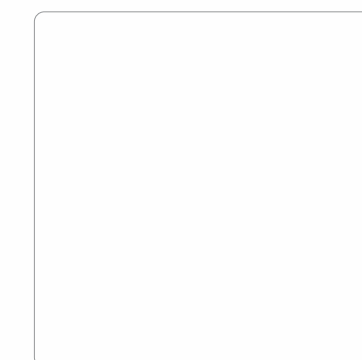


10125 - SF

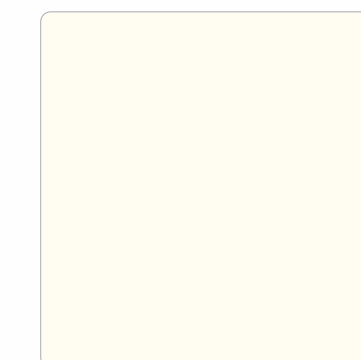


10108 - SF

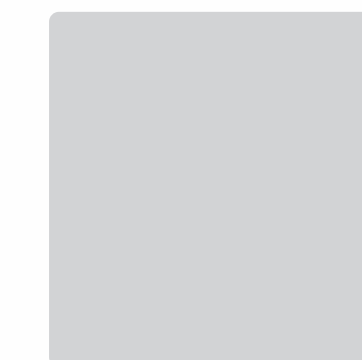
## GLOSSY SOLID



10101 - GLS



10126 - GLS



10105 - GLS



10127 - GLS



10106 - GLS



10128 - GLS



10123 - GLS



10122 - GLS



10124 - GLS



10111 - GLS



10125 - GLS



10108 - GLS



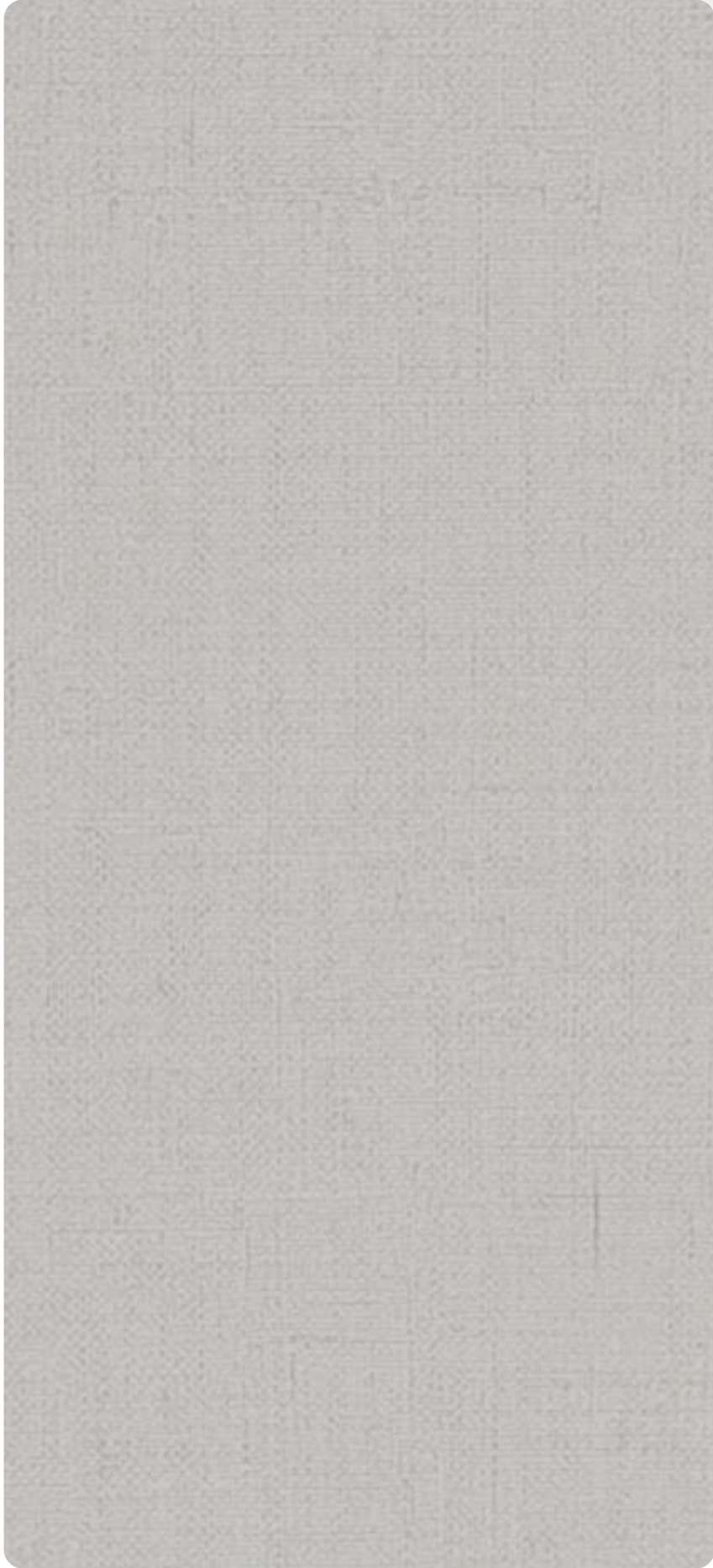
SUEDE FINISH

**THE CLASS OF SUPERIORITY**  
Touch and experience the grandiose grace of textured surfaces, which adds an extra dimension to décors with its boldness.

BREATH  
LAM



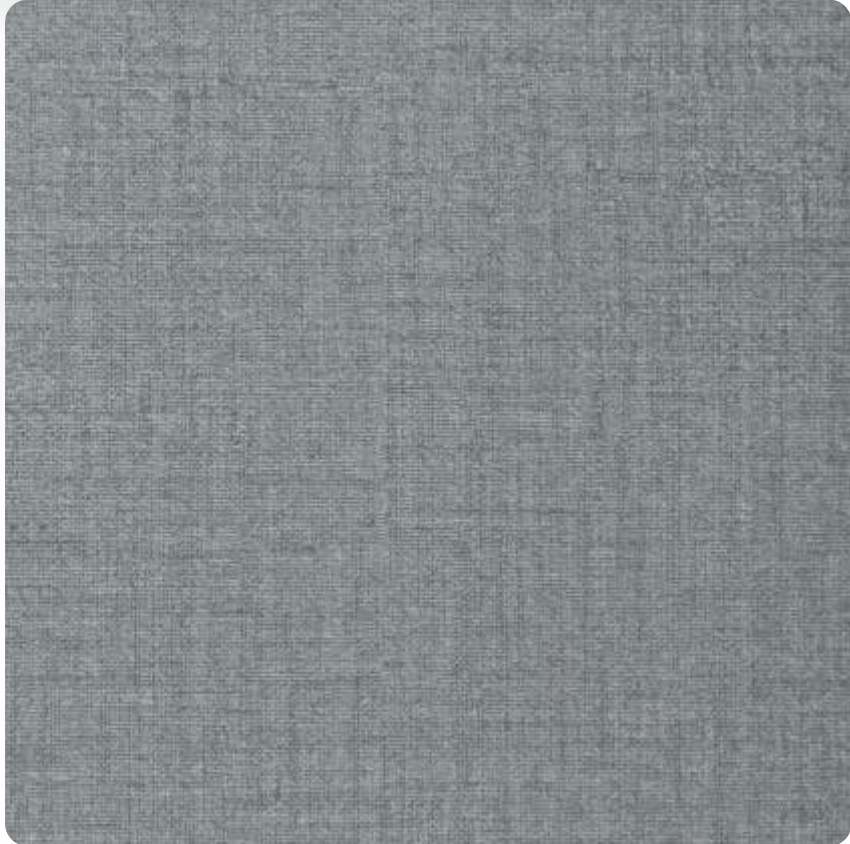
30115 - SF



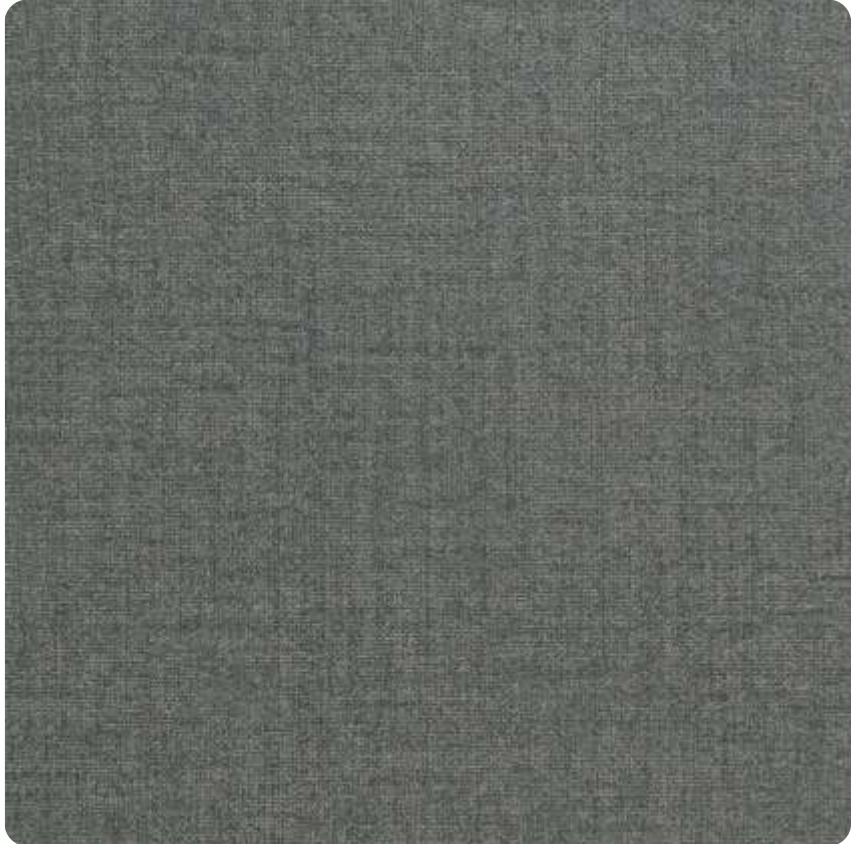
30138 - SF



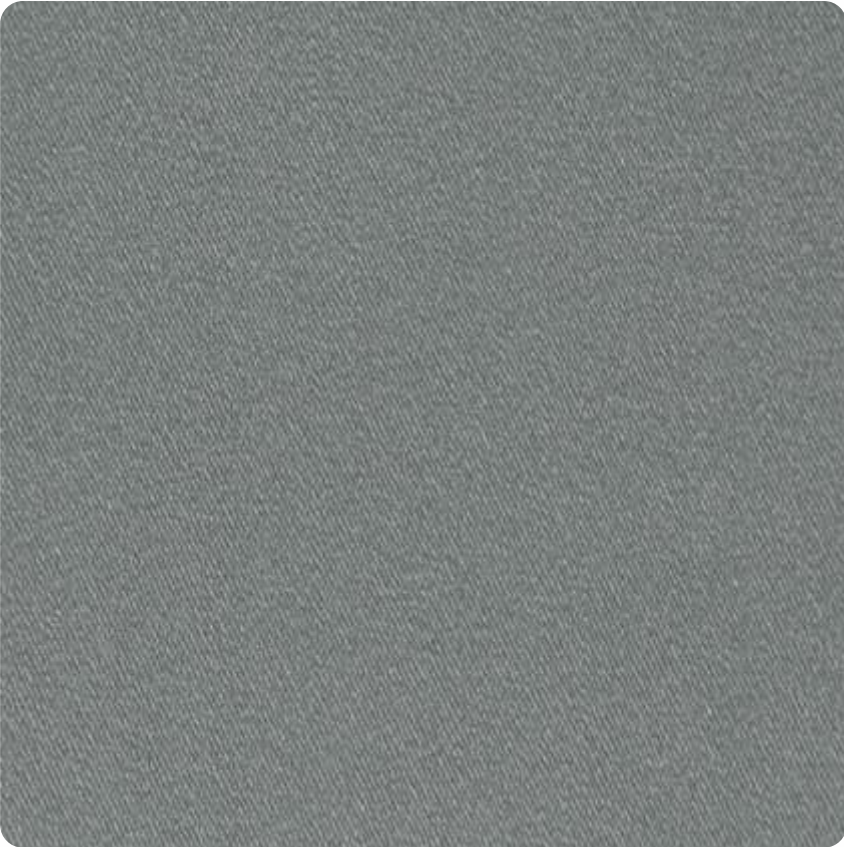
INTRICATE PRECISION  
OF ENCHANTMENT



30117 - SF



30119 - SF



30114 - SF



30118 - SF



30116 - SF



SUEDE FINISH

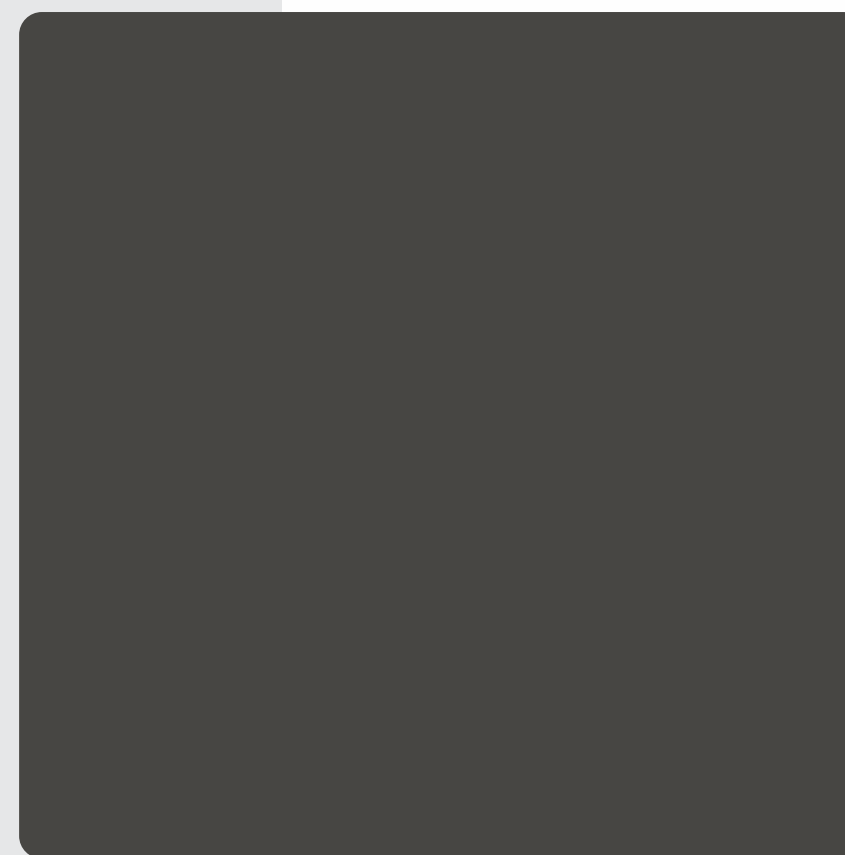
BREATH  
LAM



30154 - SF



30155 - SF



10128 - SF



30153- SF







SUEDE FINISH

**THE DANCE OF DEXTERITY**  
Let your dwelling come alive and create an aura of excitement all around by utilizing these surfaces to their maximum potential.



◀Used Laminate  
30139 - SF



30139 - SF



30140 - SF



## SUEDE FINISH



30142 - SF



30141 - SF



MADE FAMOUS  
BY FINESSE



30120 - SF



30104 - SF

### THE ÉLAN OF FLAMBOYANCE

The textures will speak, the colors will talk and your décor will scream with joy, when you incorporate these exceptional wood grain laminates in it.



30102 - SF



30111 - SF

BREATH  
LAM



SUEDE FINISH



30110 - SF



30109 - SF



30101 - SF



30113 - SF

**THE FORAY OF URBANITY**  
Settle down in the vicinity of some alluring and splendid textures that take over spaces with its bold premise.

GRAB THE  
ATTENTION



30143 - SF



30144 - SF



SUEDE FINISH

THE BLISS OF REGALITY  
GO BEYOND THE ORDINARY PERCEPTION OF MODERN SURFACES  
AND TAKE A LOOK INTO THE FUTURE WITH THIS EXCLUSIVE  
COLLECTION FEATURING AWE-INSPIRING LAMINATES.



30112 - SF



30106 - SF



30107 - SF



30105 - SF



JOY OF  
INVENTIVE FLAIR



30129 - SF



30130 - SF



SUEDE FINISH

DEFINE RULES  
OF EMINENCE



30125 - SF



30121 - SF



30122 - SF



30127 - SF



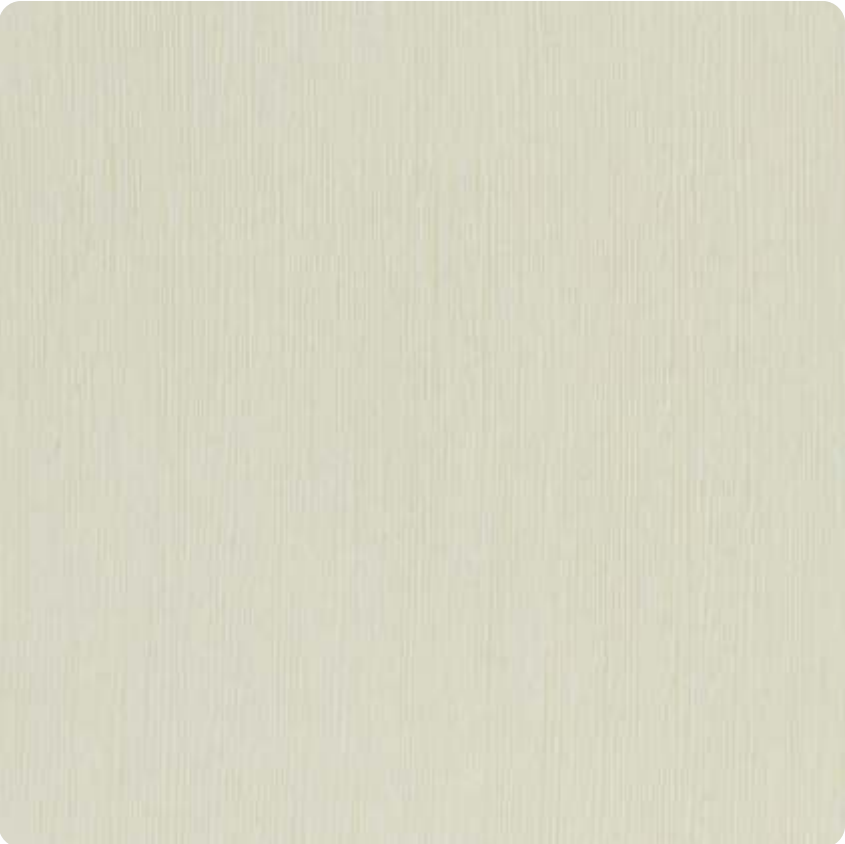
30128 - SF



30124 - SF



30123 - SF



30126 - SF

**THE MARVEL OF THRILL**  
Be the trendsetter you always know you have been and transcend into the new sphere of luxury while multiplying your style statement for all to see and appreciate.



INDEX

DESIGN NO.	FINISH NAME	PAGE NO.
10101	SF	26
10101	GLS	27
10105	SF	26
10105	GLS	27
10106	SF	26
10106	GLS	27
10108	SF	26
10108	GLS	27
10111	SF	26
10111	GLS	27
10122	SF	09
10122	GTR	23
10122	SF	26
10122	GLS	27
10123	GTR	23
10123	SF	26
10123	GLS	27
10124	GTR	23
10124	SF	26
10124	GLS	27
10125	SF	26
10125	GLS	27
10126	GTR	23
10126	SF	26
10126	GLS	27
10127	SF	26
10127	GLS	27
10128	SF	26
10128	GLS	27
10128	SF	31
30101	VNR	07
30101	OKW	12
30101	SF	36
30102	VNR	06
30102	SF	35
30103	OKW	15
30104	VNR	07
30104	OKW	18

DESIGN NO.	FINISH NAME	PAGE NO.
30104	SF	35
30105	SF	38
30106	OKW	16
30106	SF	38
30107	SF	38
30109	OKW	14
30109	SF	36
30110	OKW	14
30110	SF	36
30111	OKW	12
30111	SF	35
30112	VNR	06
30112	SF	38
30113	SF	36
30114	SF	28
30115	SF	28
30116	FT	19
30116	SF	29
30117	FT	19
30117	SF	29
30118	FT	19
30118	SF	29
30119	SF	29
30120	OKW	18
30120	OKW (HZ)	20
30120	GLS	24
30120	SF	35
30121	SF	40
30122	SF	41
30123	SF	41
30124	SF	40
30125	SF	40
30126	SF	41
30127	SF	41
30128	SF	40
30129	OKW	17
30129	SF	39
30130	OKW	17

DESIGN NO.	FINISH NAME	PAGE NO.
30130	OKW (HZ)	20
30130	SF	39
30138	FT	19
30138	SF	28
30139	VNR	05
30139	OKW	13
30139	OKW (HZ)	21
30139	GLS	25
30139	SF	33
30140	VNR	05
30140	OKW	13
30140	OKW (HZ)	21
30140	GLS	25
30140	SF	33
30141	GTR	04
30141	OKW	11
30141	GLS	24
30141	SF	34
30142	GTR	04
30142	OKW	11
30142	GLS	24
30142	SF	34
30143	GTR	03
30143	VNR	07
30143	OKW	10
30143	OKW (HZ)	20
30143	SF	37
30144	GTR	04
30144	GLS	24
30144	SF	37
30153	CNT	09
30153	GLS	25
30153	SF	30
30154	CNT	09
30154	GLS	25
30154	SF	31
30155	CNT	08
30155	SF	31

APPLICATION GUIDELINES

Thickness 1mm (+/- 10%)  
Size 1220 x 2440

**CAUSES AND RECOMMENDATION FOR AVOIDING FAILURES ARE:**  
- USE GOOD QUALITY PLYWOOD AND ADHESIVE  
- THE SURFACE TO BE BONDED SHOULD BE FREE FROM OIL/GREASE/DUST AND EXCESS MOISTURE  
- INSUFFICIENT AMOUNT OF ADHESIVE ON EITHER OR BOTH THE SURFACE TO BE BONDED

When ready for bonding the spread film of most contact adhesive will exhibit a uniform semi-gloss appearance over the entire surface of the material to be bonded. Marked variation in appearance will generally indicate an improper or non-uniform bonding in those areas where insufficient adhesive has been applied. If this occurs, re-coating the surface should achieve a uniform coating. Double coating the edges with adhesive is advisable because of the higher porosity of the substrate edge.

**- INSUFFICIENT BONDING PRESSURE**  
To ensure intimate contact necessary for an adequate bond, sufficient pressure should be applied over the entire area using as much pressure as possible without damaging the assembly. Pinch rollers (rotary press) and heavy weighted rollers are ideal. Hand pressure rolling is adequate, provided the operator exerts maximum pressure by means of a two-handled or single long-handled roller. The rollers should be of steel or hard solid rubber (50-80 diameter) and not over 75mm (3 inches) wide. Hand rolling should be repeated twice.

**- BONDING WHEN ADHESIVE SURFACE IS OVER-DRY OR UNDER-DRY**  
Care should be taken to follow the manufacturer's recommendations concerning the allowable tack range of the adhesive. If the assembly is done before the adhesive is dry or after the allowable open time is exceeded, then the bonding result may be unsatisfactory.

**- BONDING OF SURFACE UNDER 21 deg. C ( 70 deg. F)**  
Unless otherwise indicated by the manufacturer the temperature of the gluing area and all materials should be 21 deg. C (70 deg. F) or above.

**- BONDING OF SURFACE WHERE HUMIDITY IS TOO HIGH**  
Experience has shown that when the relative humidity is above 80 percent at temperatures of 21 deg. C (70 deg. F) or lower moisture may condense on the surface during drying (Known as "blushing ") and will prevent an acceptable bond. Hot spray or forced air drying may be used to prevent this condition.

**- IMPROPERLY PREPARED OR DIRTY GLUING SURFACES**  
The surfaces should be clear, dry and free of oils or other contaminants, such as dust, loose sand particles, and so forth. The adhesive film should have full contact with the surface to which it is applied in order to give maximum adhesion.

**- FIELD BONDING OF OVERSIZED SHEETS**  
It is recommended that the maximum sheet size used for vertical field application be limited to 610x2400mm (2x8 Feet). If larger panels are required, these should be fabricated in the shop.


**- UNDER PRESSURE**  
After bonding, even pressure of 100 gm/ sq.ft. must be maintained for 6 to 8 hours.


**Notes:**


- It is recommended to check the laminate sheet before fixing.
- No complaint shall be entertained on laminates already fixed.
- In case of any complaint, the company's liability is limited to the cost of the laminate sheet only.
- DAMAS Laminates reserves the right to delete, amend either totally or partially, any of the design, finishes, references and other technical specifications contained in this catalogue at any time.
- The sample Swatches in the catalogue shows Color Pattern and finishes only. It does not show the actual thickness of the product.





A LOOK AT HOW YOU CAN LOOK AFTER OUR LAMINATES

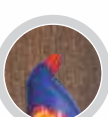
- 

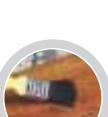
Do not place frying pans or dishes directly from the oven or cook-top on the Laminate surface. Protect the surface from heat generating appliances.
- 


Do not use knives, keys or other sharp objects directly on the decorative surface. A chopping board or counter saver is recommended.
- 

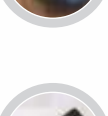
To clean the surface, use a damp cloth or sponge and a mild soap or detergent.
- 

Difficult stains such as coffee or tea can be removed using a mild household cleaner or detergent and a soft-bristled brush, repeat if necessary.
- 

Acidic or abrasive cleaners can damage Laminate surfaces; please do not use them.
- 

Toilet cleaners contain harsh chemicals that can cause permanent damage. If spills occur, please wipe immediately, wash the surface with soapy water and rinse several times.
- 

If a stain persists, use a paste of baking soda and water and apply with a soft-bristled brush. Light scrubbing with about 10 to 20 strokes should remove most stains. Although baking soda is a low abrasive, excessive scrubbing or exerting too much force could damage the decorative surface.
- 

Steel wool and other abrasive pads can damage Laminates. Do not use them for cleaning and do not place steel wool pads on your counter-tops as the metal can rust and leave stains.
- 

Hair, textile and food dyes can cause permanent stains. If any dye should happen to inadvertently spill, please wipe it immediately with a dish-washing detergent or an all-purpose cleaner.